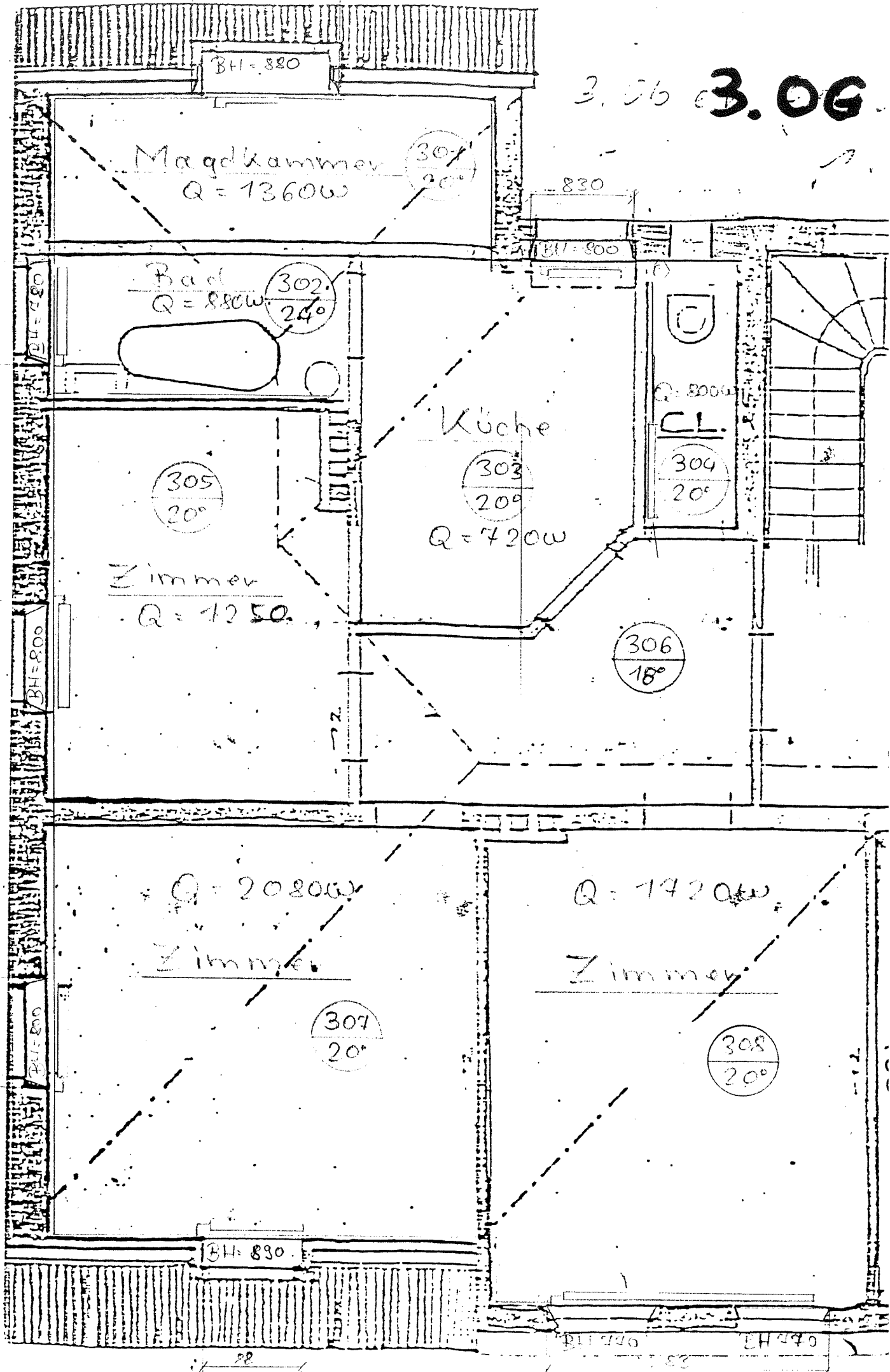


3.06 3.06



1200

BH = 820

2.06

201
20°

Wohnkammer

Q = 1260W

Fenster

1160

Q = 1490W

BAD

202
24°



Q = 740W

CL.

204
20°

KÜCHE

203
20°

Q = 620W

205
20°

Q = 1020W

ZIMMER

206
18°

CORRID.

1180

BH = 210

207
20°

Q = 1860W

ZIMMER

208
20°

Q = 1290W

ZIMMER

1170

BH = 820

Fl. Hei. wasser p...

114

1110

EG

311=990

МАГДЖ.

1
20°

Q = -1350W

114
BL=460

БЯД

2
24°



КÜCHE

CL.

4
20°

3
20°

ZIMMER

5
20°

CORRID.

6
18°

Q = 2130W

ZIMMER

7
20°

Q = -1350W

ZIMMER

8
20°

3.8.15

3.8.15

3.8.15

120
BL=440

160
BL=440